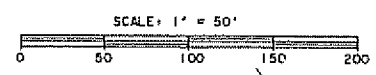
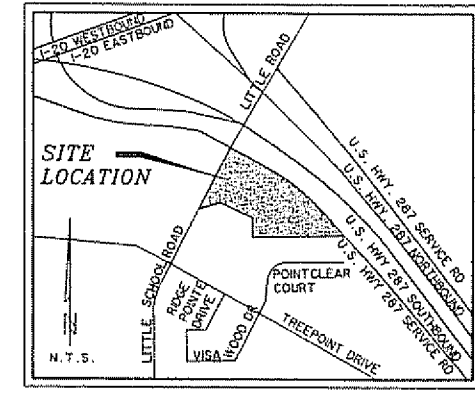
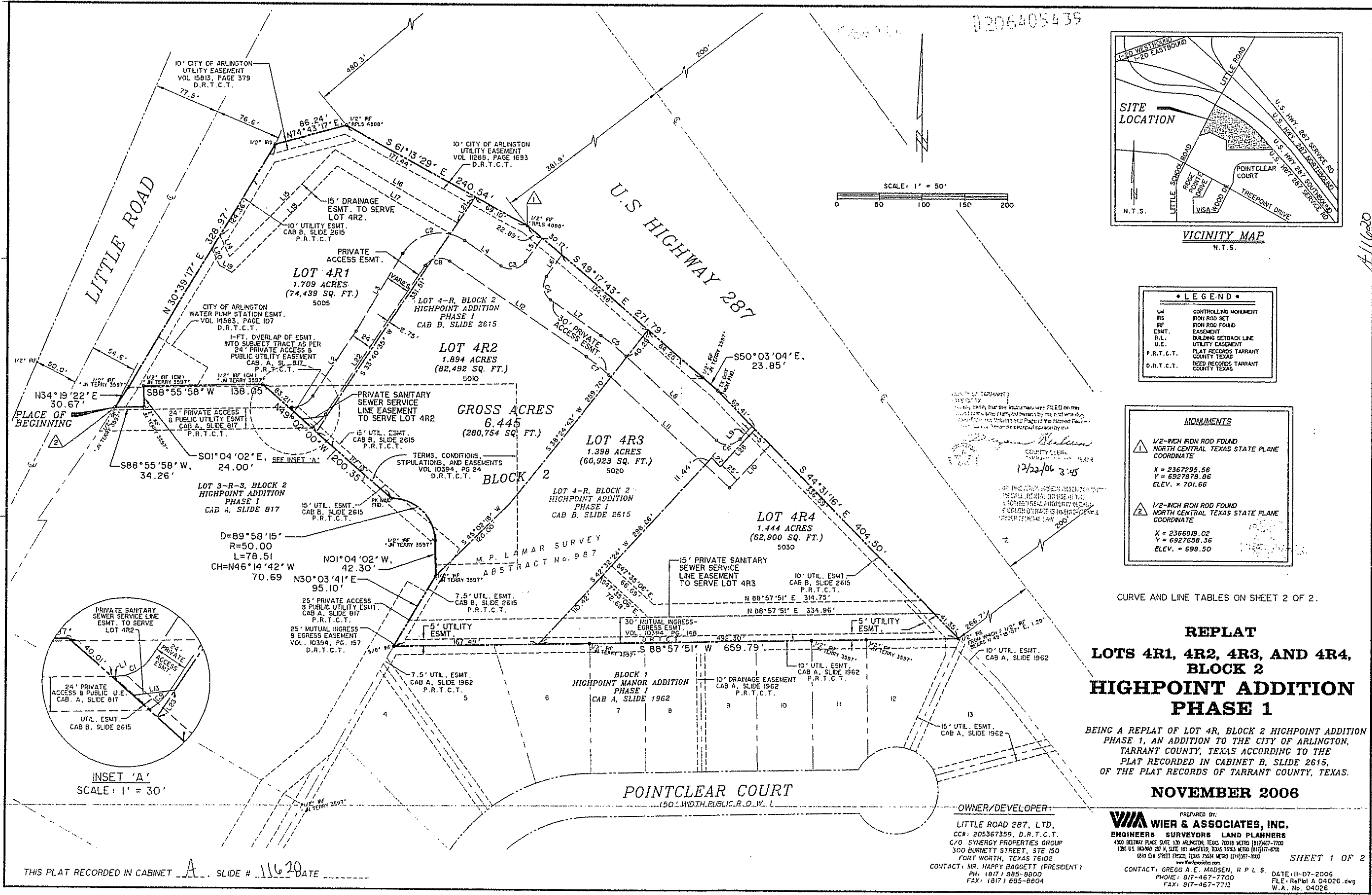


0206405435



LEGEND

- CM CONTROLLING MONUMENT
- RS IRON ROD SET
- RF IRON ROD FOUND
- ESMT. EASEMENT
- D.L. DRAINAGE SETBACK LINE
- U.E. UTILITY EASEMENT
- P.R.T.C.T. PLAT RECORDS TARRANT COUNTY TEXAS
- D.R.T.C.T. DEED RECORDS TARRANT COUNTY TEXAS

MONUMENTS

- 1/2-INCH IRON ROD FOUND NORTH CENTRAL TEXAS STATE PLANE COORDINATE
X = 2367295.56
Y = 6927978.06
ELEV. = 701.66
- 1/2-INCH IRON ROD FOUND NORTH CENTRAL TEXAS STATE PLANE COORDINATE
X = 2366819.02
Y = 6927558.36
ELEV. = 698.50

CURVE AND LINE TABLES ON SHEET 2 OF 2.

**REPLAT
LOTS 4R1, 4R2, 4R3, AND 4R4,
BLOCK 2
HIGHPOINT ADDITION
PHASE 1**

BEING A REPLAT OF LOT 4R, BLOCK 2 HIGHPOINT ADDITION PHASE 1, AN ADDITION TO THE CITY OF ARLINGTON, TARRANT COUNTY, TEXAS ACCORDING TO THE PLAT RECORDED IN CABINET B, SLIDE 2615, OF THE PLAT RECORDS OF TARRANT COUNTY, TEXAS.

NOVEMBER 2006

OWNER/DEVELOPER:
LITTLE ROAD 287, LTD.
CC# 205367359, D.R.T.C.T.
C/O SYNERGY PROPERTIES GROUP
300 BURNETT STREET, STE 150
FORT WORTH, TEXAS 76102
CONTACT: MR. HAPPY BAGGETT (PRESIDENT)
PH: (817) 895-8800
FAX: (817) 655-8804

PREPARED BY:
WIA WIER & ASSOCIATES, INC.
ENGINEERS SURVEYORS LAND PLANNERS
4300 BELMONT PLACE SUITE 130 ARLINGTON TEXAS 76010 METRO (817)467-7700
1380 US HIGHWAY 287 #A, SUITE 100 WICKLIFFE, TEXAS 75095 METRO (817)467-8700
8217 EM STREET FRODO, TEXAS 75040 METRO (817)467-7000
www.wierassociates.com
CONTACT: GREGG A. E. MADSEN, R.P.L.S. DATE: 11-07-2006
PHONE: 817-467-7700 FILE: RePlat A 04026.dwg
FAX: 817-467-7712 W.A. No. 04026

SHEET 1 OF 2

THIS PLAT RECORDED IN CABINET A SLIDE # 11620 DATE _____

A111620